

Crucible

FOLLOWING JESUS ON THE MARGINS



On the margins?

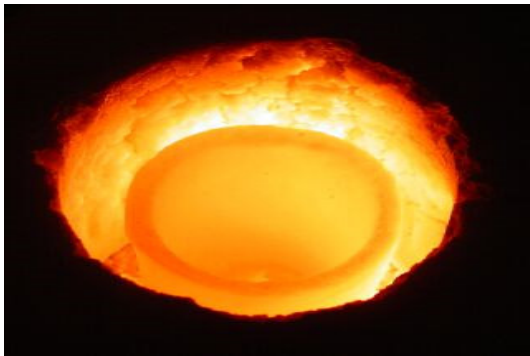
Christians across western culture are facing profound challenges and fresh opportunities. The long era of 'Christendom' is coming to an end. We now live in a plural society, with multiple religious options alongside the prevailing secular assumptions, in which Christianity has lost its position of dominance and privilege and churches are on the margins of society. Although we seem to be declining in numbers and influence, this context offers many new possibilities – if we have the courage and imagination to grasp them.

Why the Crucible course?

Crucible is for Christians with courage and imagination, who suspect:

- We need to operate as cross-cultural missionaries because we live in a cross-cultural mission context.
- We need to think creatively about incarnating the gospel and planting new kinds of churches in emerging and diverse cultures.
- We need to recover the biblical vision of *shalom* and reflect on how we live as followers of Jesus in light of this all-embracing vision.
- We need to pay particular attention to the margins, because we serve the God who frequently does new things there:
 - On the margins of society among the poor and disenfranchised.
 - At the margins of culture, where creative thinking explores new possibilities.
 - On the margins of the familiar, the spaces all around us, neglected or ignored, but full of potential.

What is a crucible?



- A melting pot, where antiquated structures are made pliable and reshaped.
- A time when powerful political, social, intellectual or economic forces converge.
- A place where different cultures or styles can mix together and produce something new.

Who runs the course?

The course was developed by Andrew Grinnell, Juliet Kilpin and Stuart Murray Williams (who continue to host it) and was sponsored initially by **Urban Expression** and **614UK**, a Salvation Army initiative. This year the course is running in partnership with the Incarnate Network, the Northumbria Community, Workshop and BMS World Mission, and in association with the Cafechurch Network.

What does the course involve?

Crucible runs three intensive training weekends each year to equip Christians to follow Jesus on the margins. Two streams are available on each weekend. Each stream flows separately, but the subjects can be done in any combination:

Stream 1

After Christendom (30-31 October 2010) investigates the opportunities, as well as the challenges, that the end of imperial Christianity presents.

Urban Challenge (26-27 February 2011) examines the dynamics of mission and ministry in multicultural urban communities, where Christendom has faded first.

Creating New Churches (2-3 July 2011) offers resources for pioneering new churches – and new kinds of churches – in emerging cultures, and renewing existing churches.

Stream 2

Restoring Hope (30-31 October 2010) asks how, in light of God's mission to bring *shalom* (peace) to all creation, we can live towards that hope and create communities of peace.

Becoming Human (26-27 February 2011) explores the dynamics of discipleship in a multi-everything culture and asks how we can become more fully human as followers of the Son of Man.

Jesus Unplugged (2-3 July 2011) imagines how we can re-tell the story of Jesus today in ways that connect with contemporary cultures.

Placements

Participants will also be offered opportunities for year-long or short-term placements in various contexts – to work out in practice what they learn on these weekends.

Online learning

For those interested, some of the weekends are supported by online learning modules, validated by The University of Wales, in partnership with Spurgeon's College, London.

Venue

International Mission Centre, 24 Weoley Park Road, Selly Oak, Birmingham B29 6QX

Cost

£50 per weekend or £130 for all three. Accommodation and meals at the International Mission Centre or nearby can also be booked through the course administrator.

Interested?

For further information, or to book a place, please return the response form. Or find out more at: www.cruciblecourse.org.uk or contact **Jo** at crucible@urbanexpression.org.uk or on 07773 202738.

Response Form

Name.....

Address.....

.....

.....

Tel No.....Email.....

Stream 1

- Please reserve a place for me on **all three** weekends of the **Crucible** course. I enclose a cheque for £130.
- Please reserve a place for me on the **After Christendom** weekend (30-31 October 2010). I enclose a cheque for £50.
- Please reserve a place for me on the **Urban Challenge** weekend (26-27 February 2011). I enclose a cheque for £50.
- Please reserve a place for me on the **Creating New Churches** weekend (2-3 July 2011). I enclose a cheque for £50.

Stream 2

- Please reserve a place for me on **all three** weekends of the **Crucible** course. I enclose a cheque for £130.
- Please reserve a place for me on the **Restoring Hope** weekend (30-31 October 2010). I enclose a cheque for £50.
- Please reserve a place for me on the **Becoming Human** weekend (26-27 February 2011). I enclose a cheque for £50.
- Please reserve a place for me on the **Jesus Unplugged** weekend (2-3 July 2011). I enclose a cheque for £50.

Accommodation and Meals

- I would like accommodation and meals. Please send more information
- I would like meals only. Please send more information
- I do not require accommodation or meals

- Please send me further information about the **Crucible** course.

Return to Crucible: 24 Effingham Road, Bristol BS6 5BJ (cheques payable to 'Urban Expression').